

ESG and Impact Dashboard



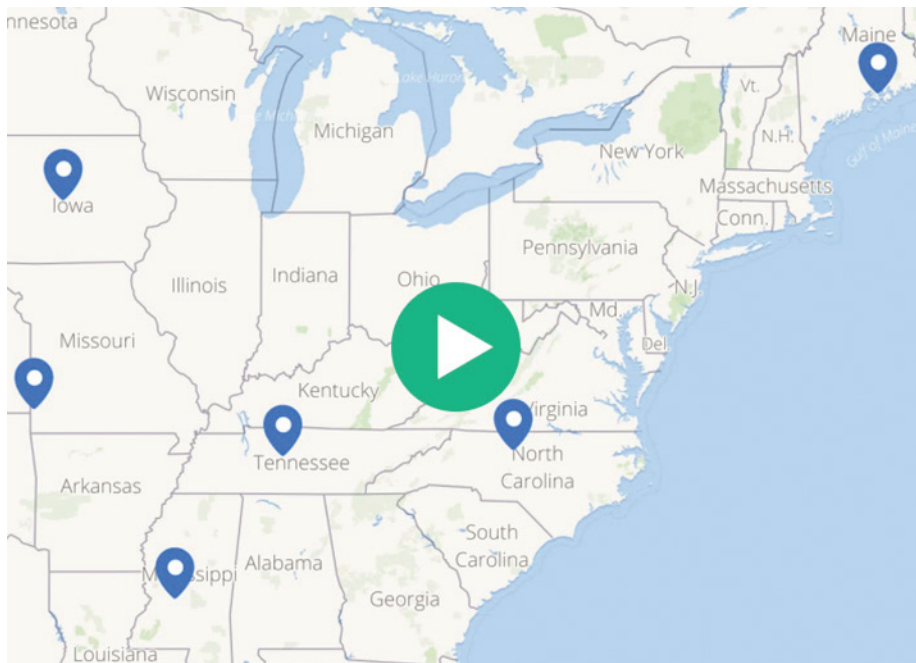
ESG and Impact can be difficult to quantify and manage. Our new ESG and Impact Dashboard is designed to make measurement simpler, to save you time, and to help you find the most effective ways to integrate ESG and Impact into your core business.

Built on the platform of our proprietary CMF data management system, the Dashboard is a secure, endlessly customizable, and always available answer to the challenges of ESG and Impact Management.

Our tiered pricing structure allows us to deliver exactly the solutions you need at the price point that's right for you.

From simple Dashboard setup, to full-fledged ESG & Impact Management Playbooks and Reporting, we're here to help you grow your competitive advantage with ESG and Impact.

Manufacturing Locations



Our Dashboards include: Geotagged mapping to help you locate and visualize your ESG and Impact footprint.

Have questions?
Suggestions?
Or interested in a demo?
Contact:



Pamela Rothenberg
Founder / Leader Impact Business Group

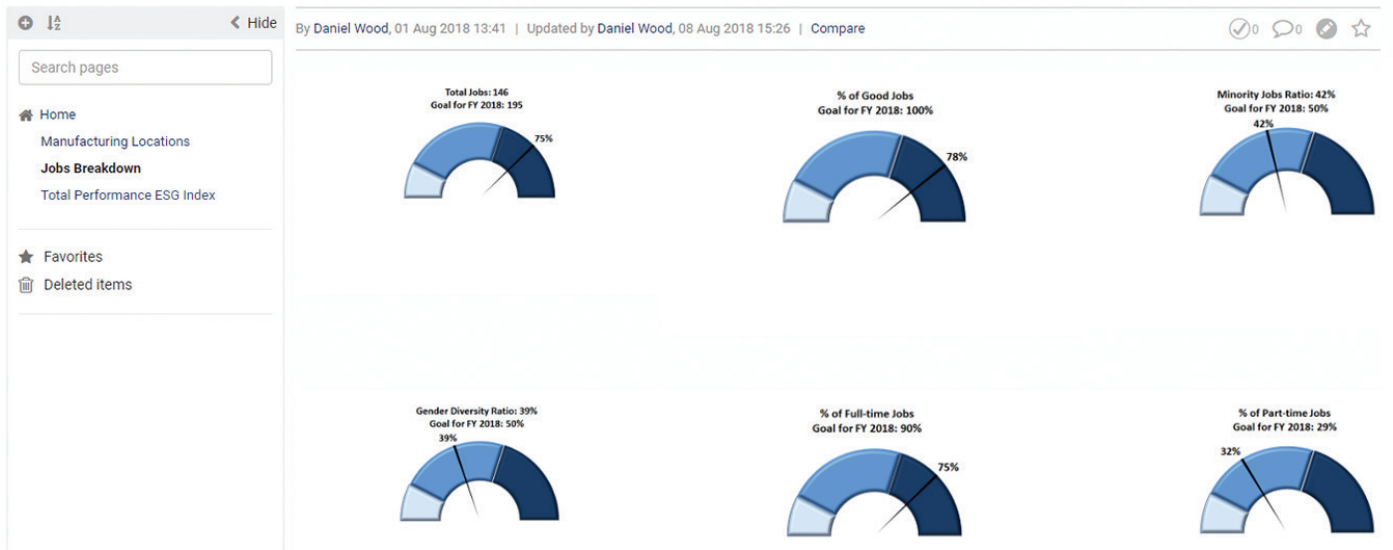
t: 202.857.4422
e: pam.rothenberg@wbd-us.com



Mark Newberg
Director of Impact Strategies

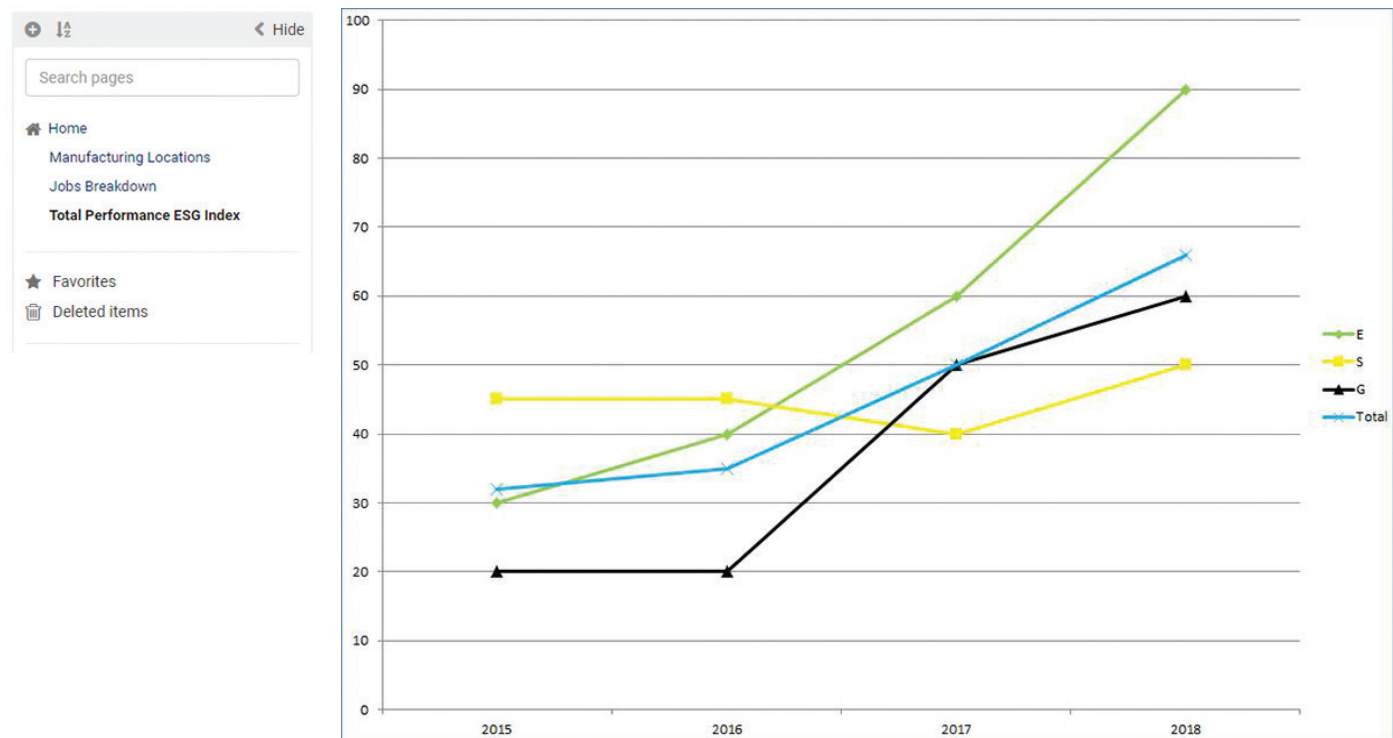
t: 202.467.6900
e: mark.newberg@wbd-us.com

Jobs Breakdown



Simple graphical interfaces to visually convey your core ESG and Impact metrics...

Total Performance ESG Index



And custom indexes to display at-a-glance information about what matters most to your enterprise.

“Womble Bond Dickinson,” the “law firm” or the “firm” refers to the network of member firms of Womble Bond Dickinson (International) Limited, consisting of Womble Bond Dickinson (UK) LLP and Womble Bond Dickinson (US) LLP. Each of Womble Bond Dickinson (UK) LLP and Womble Bond Dickinson (US) LLP is a separate legal entity operating as an independent law firm. Womble Bond Dickinson (International) Limited does not practice law. Please see www.womblebonddickinson.com/us/legal-notice for further details.